

State of Wyoming Corner Record

(In compliance with the CORNER PERPETUATION AND FILING ACT, Wyoming Statutes, 1977, Section 36~11~101, et seq., and the Rules and Regulations of the Board of Registration for Professional Engineers and Professional Land Surveyors)

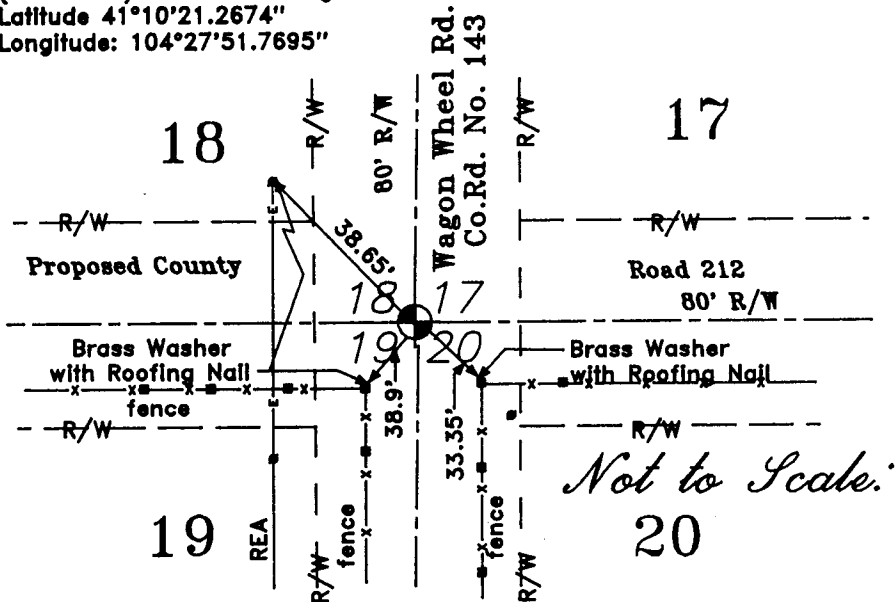
The reverse side of this form may be used if more space is needed.

The Record of the original survey and the citation of the source of the historical information (if the corner is lost or obliterated). The description of the corner monumentation evidence as found and/or the monument and it's accessories as established to perpetuate the location of this corner. A sketch of the relative location of this Monument, accessories, and reference points with the course and distance to adjacent corner (s) (if determined during this Survey). The Method and Rationale used for the reestablishment of lost and obliterated corner.

GLO: Edwin James Deputy Surveyor & Alfred M. Rogers under joint contract, 20 May 1871, finish 16 June 1871, contract No. 15: North between Section 19 & Section 20 (Variation 15.35'E) at 40 chains set Granite stone 16"X12"X6" for 1/4; at 80 chains set a sandstone 22"X10"X5" for the corner of Sections 17,18,19 & 20.

No evidence of corner exist. Double proportioned the location of this Section corner in from #5 rebar found for corner of Sections 15,16,21 & 22 in center line of County Road No.145 & a rebar with an Aluminum Cap LS2500 found in the Centerline of County Road No.142 (Hillsdale Road) being at the corner for Sections 18 & 19 of T.14N. R.63W. and the corner for Sections 13 & 24 of T.14N R.64W.; found rebar with an Aluminum Cap in the Centerline of County Road No.143 (Wagon Wheel Road) being the corner for Sections 19,20,29 & 30 7nd an Aluminum Cap PE & LS 707 in the Centerline of said County Road being the corner for Sections 5,6,7 & 8.

Set 2"X32" Iron pipe with 3" Aluminum Cap 6" below the surface of the road way surface of County Road No. 143 (Wagon Wheel Road)
 (NAD 1927) Latitude & Longitude:
 Latitude 41°10'21.2674"
 Longitude: 104°27'51.7695"



LARAMIE COUNTY CLERK

255193

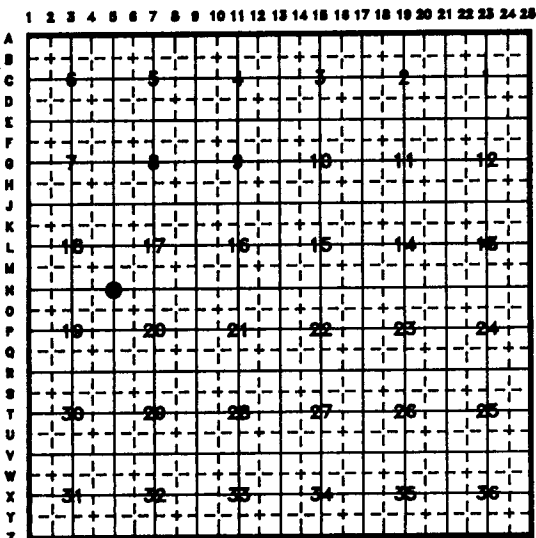
Date of Field Work: June A.D.1999 Office Reference: 20BRKTT (Open Trail Est.)
 9030

Cross Index Diagram

Firm/Agency, Address

Terrestrial Surveying & Mapping Co.
 "Your Friendly Neighborhood Surveyor"
 1127 Terry Ranch Road
 Cheyenne, Wyoming 82007
 Telephone Number: (307) 634~9380

T.14 N. R.63 W. 6th P.M.



This Corner Record was prepared by me or under my direction and supervision.

SEAL & SIGNATURE



Corner Name: Sec. Cor. Section: 18, 17 T.14 N. R. 63 W. 6th P.M. Cross Index No. 19, 20

N~5

1021